

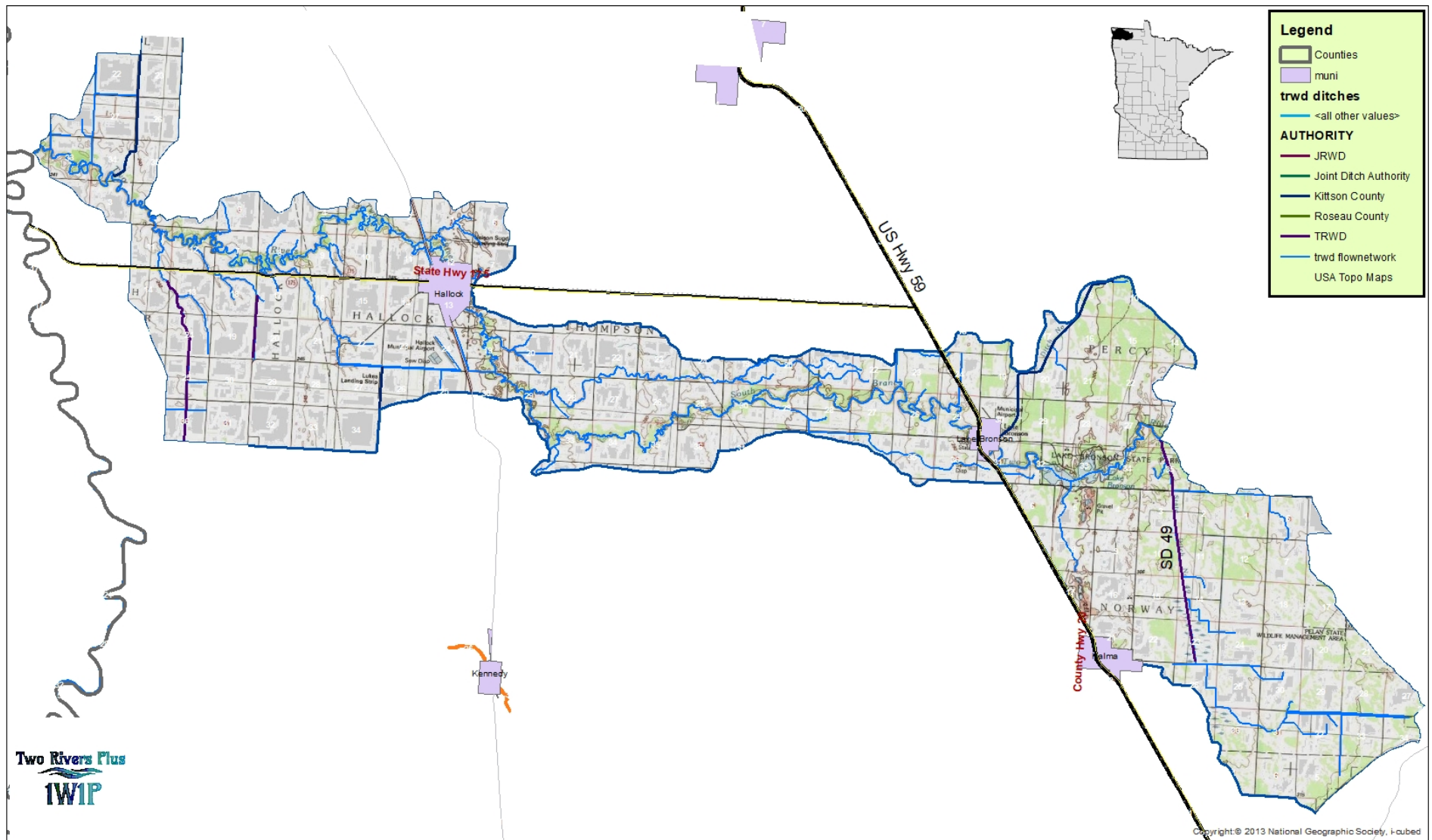
Two Rivers Plus One Watershed, One Plan

Roseau County; Roseau SWCD; Kittson
County; Kittson SWCD; Two Rivers Watershed
District



South Branch Two Rivers Planning Zone

- ❖ **Description:** This area is approximately 135 square miles in size and comprises the drainage area of State Ditch 49, the South Branch Two Rivers from Lake Bronson to Hallock, and the South Branch Two Rivers from Hallock to the Red River. The landscape is characterized by pasture, hay, grassland-wetland east of US Hwy 59 and intensive cropland west of US Hwy 59. Major landscape features include Lake Bronson State Park. Topography is steep in upper reaches of the planning zone, and relatively flat in the downstream reaches.
- ❖ **Cities:** Hallock, Lake Bronson, Halma
- ❖ **Legal Drainage Ditches:** KCD 12, KCD 21, KCD 25, SD 48, SD 49
- ❖ **Other Watercourses:** A few unnamed coulees connect to the South Branch Two Rivers.
- ❖ **TRWD Projects:** None
- ❖ **Other Structures:** Lake Bronson Dam, Hallock Dam.
- ❖ **Common Issues:** Overland flooding along SD 49, road washouts, crop and hay land flooding, maintenance of drainage ditches, insufficient channel capacities / drainage issues, wind erosion, buffers. Natural resource issues include habitat, algae blooms & sedimentation on Lake Bronson, water quality impairments on SD 49 and S. Br. Two Rivers, fish passage, and unstable stream flows.



South Branch Planning Zone

0 0.5 1 2 Miles

