

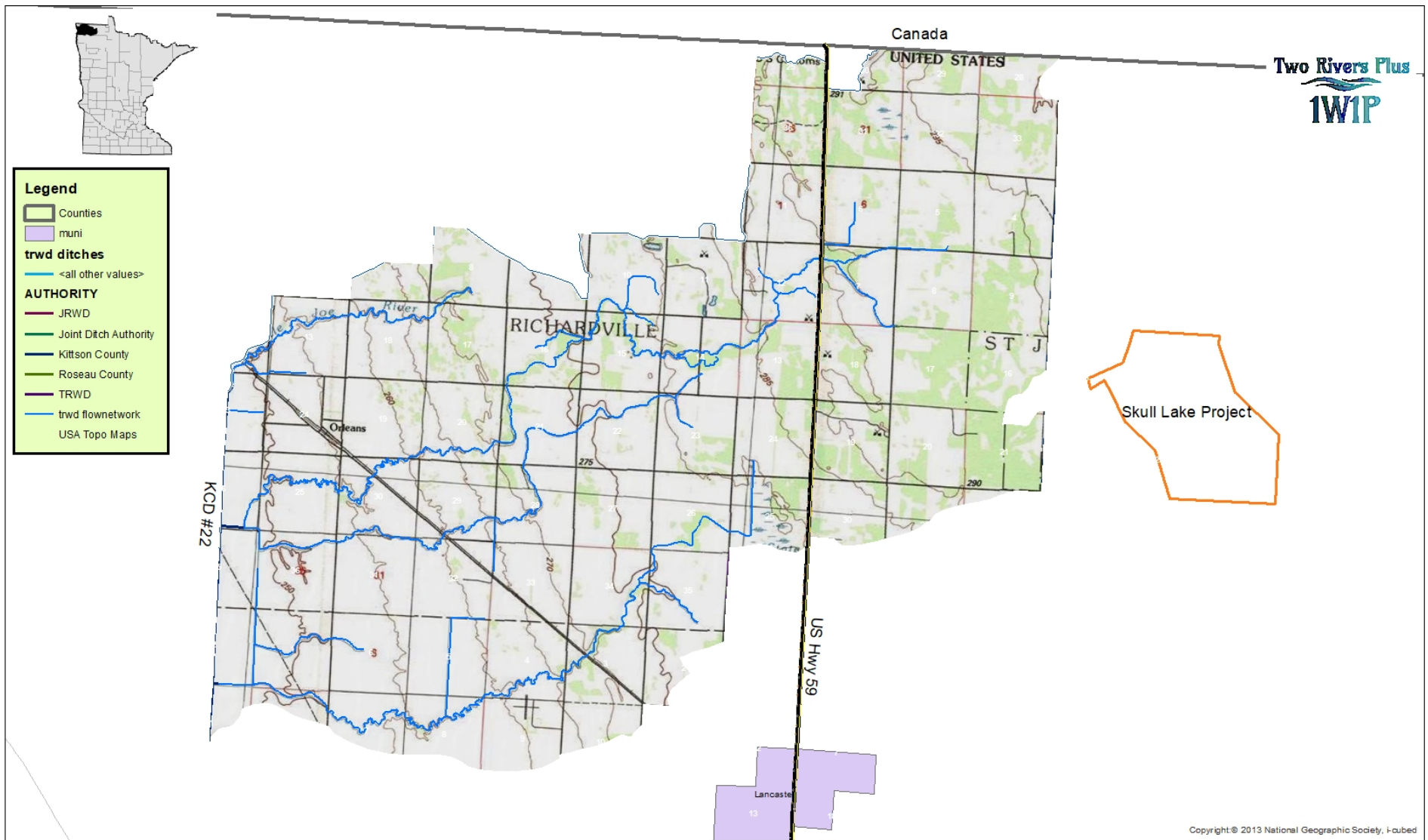
Two Rivers Plus One Watershed, One Plan

**Roseau County; Roseau SWCD; Kittson
County; Kittson SWCD; Two Rivers Watershed
District**



Little Joe River Planning Zone

- ❖ **Description:** This planning zone is approximately 64 square miles in size and comprises the area drained by the Little Joe River and 3 other unnamed coulees. The zone consists of predominantly agricultural land with pasture-hay-grassland in the upper 1/3, and cultivated land in the remaining 2/3 of the area. Topography is relatively steep across most of the planning zone.
- ❖ **Cities:** None
- ❖ **Legal Drainage Ditches:** KCD 22
- ❖ **Other Watercourses:** Three major unnamed coulees and the Little Joe River all are tributary to KCD 22.
- ❖ **TRWD Projects:** None
- ❖ **Other Structures:** None
- ❖ **Common Issues:** Overland flooding, drainage along the international border, road washouts, crop and hay land flooding, water supply for livestock, maintenance of drainage ditches, insufficient channel capacities, wind & water erosion, buffers. Natural resource issues include habitat, water quality impairments, fish passage, and unstable stream flows.



Little Joe River Planning Zone